



# GUILD

terraces

TORRENS TITLED

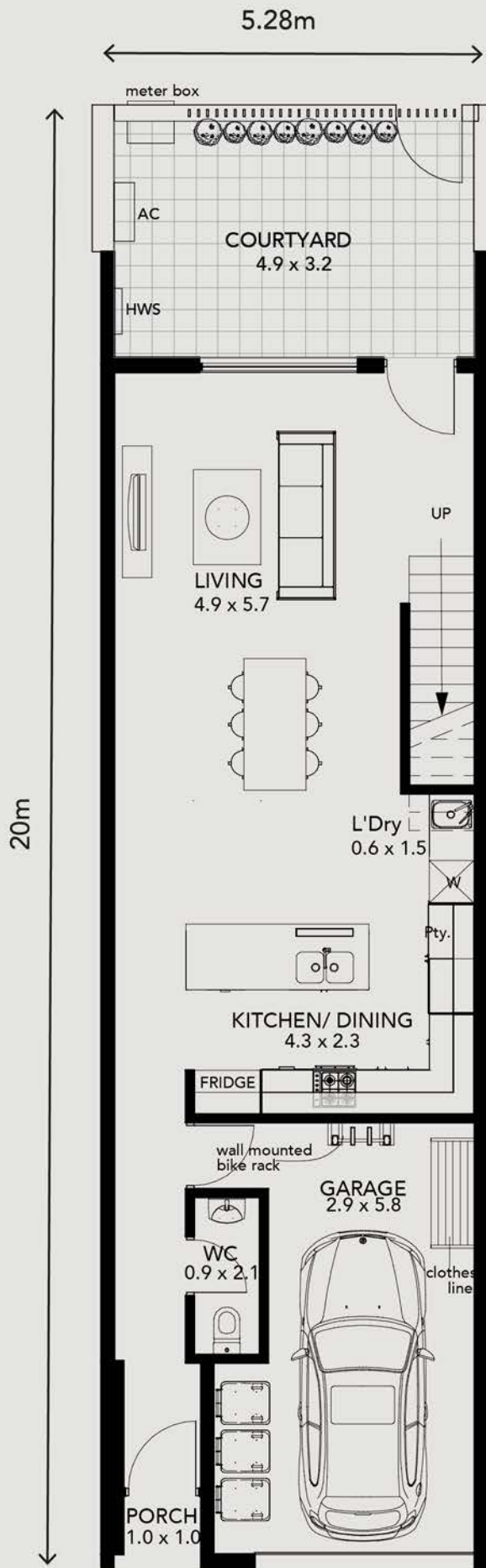
## MATISSE (3 BED)

9,13,17 and 21 Drayton Street, Bowden

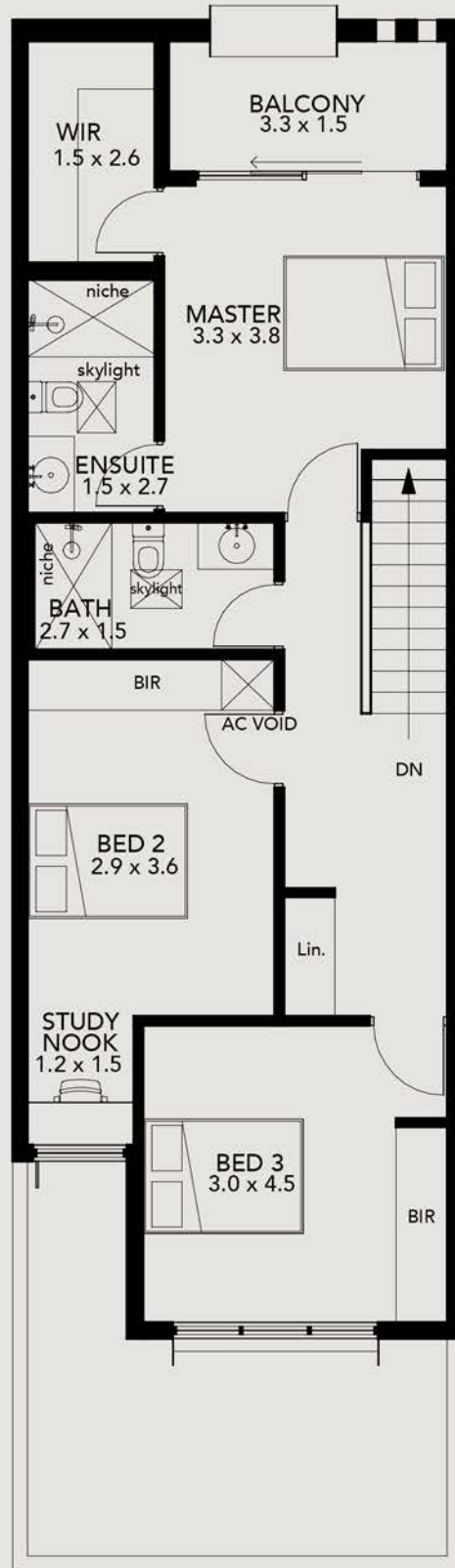
Overlooking a beautifully landscaped reserve these uniquely designed homes will connect you to the Bowden community and all that it has to offer.

The MATISSE floor plan has been carefully designed with you in mind for maximum comfort and ease of living. With European appliances and a palette that you can make your own, the MATISSE offers a lifestyle choice like no other.





**Ground Floor 61m<sup>2</sup>**  
(excluding garage)

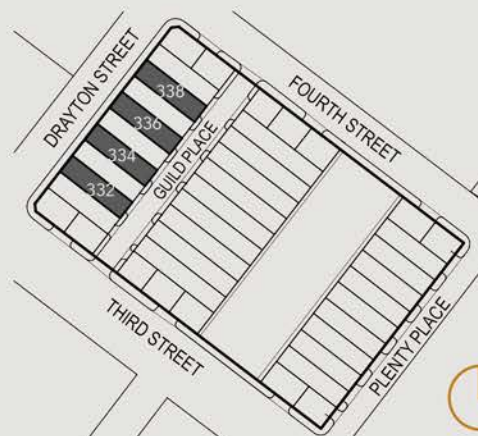


**First Floor 73m<sup>2</sup>**  
(excluding balconies)

## MATISSE

9 Drayton Street, Bowden  
13 Drayton Street, Bowden  
17 Drayton Street, Bowden  
21 Drayton Street, Bowden

The MATISSE Terrace in the heart of Bowden's thriving new community is close to all the lifestyle advantages of Plant 4 and the Town Square with great transport options.



NOT TO SCALE

### This 2 storey, 3 bedroom home features:

- Unique brick façade
- Living and dining area with quality finishes
- Master bedroom with ensuite and walk-in robe
- Outdoor living
- Large kitchen with Smeg appliances
- Stone benchtops
- Quality energy efficient appliances
- Quality floor coverings
- Liveability and Green living features including targeted 5 star Green Star rating
- Solar panels

### Area

Internal Living	134m <sup>2</sup>
Garage	22m <sup>2</sup>
Balcony	5m <sup>2</sup>
<b>Total</b>	<b>161m<sup>2</sup></b>
Courtyard	16m <sup>2</sup>
Porch	1m <sup>2</sup>
<b>Land area</b>	<b>106m<sup>2</sup></b>



**Front Elevation (Drayton Street)**



**Rear Elevation (Guild Place)**

[guildterraces.com.au](http://guildterraces.com.au)

For more information please contact our friendly sales consultant

M 0456 888 580

E [info@guildterraces.com.au](mailto:info@guildterraces.com.au)

Bowden Information and Sales Centre

4 Third Street (adjacent Plant 4, Bowden)

**CENTINA**

life  
more  
interesting  
.com.au

**Bowden**

RenewalSA

